

# Energy5

European-Made PV Structures

---

## Fixed-tilt Mounting System

**11**  
years of  
experience

**2**  
manufacturing  
facilities

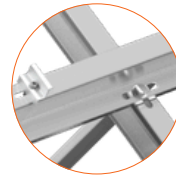
**7GW+**  
delivered  
PV structures

**1.5GW**  
annual  
production  
capacity

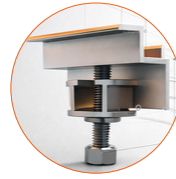




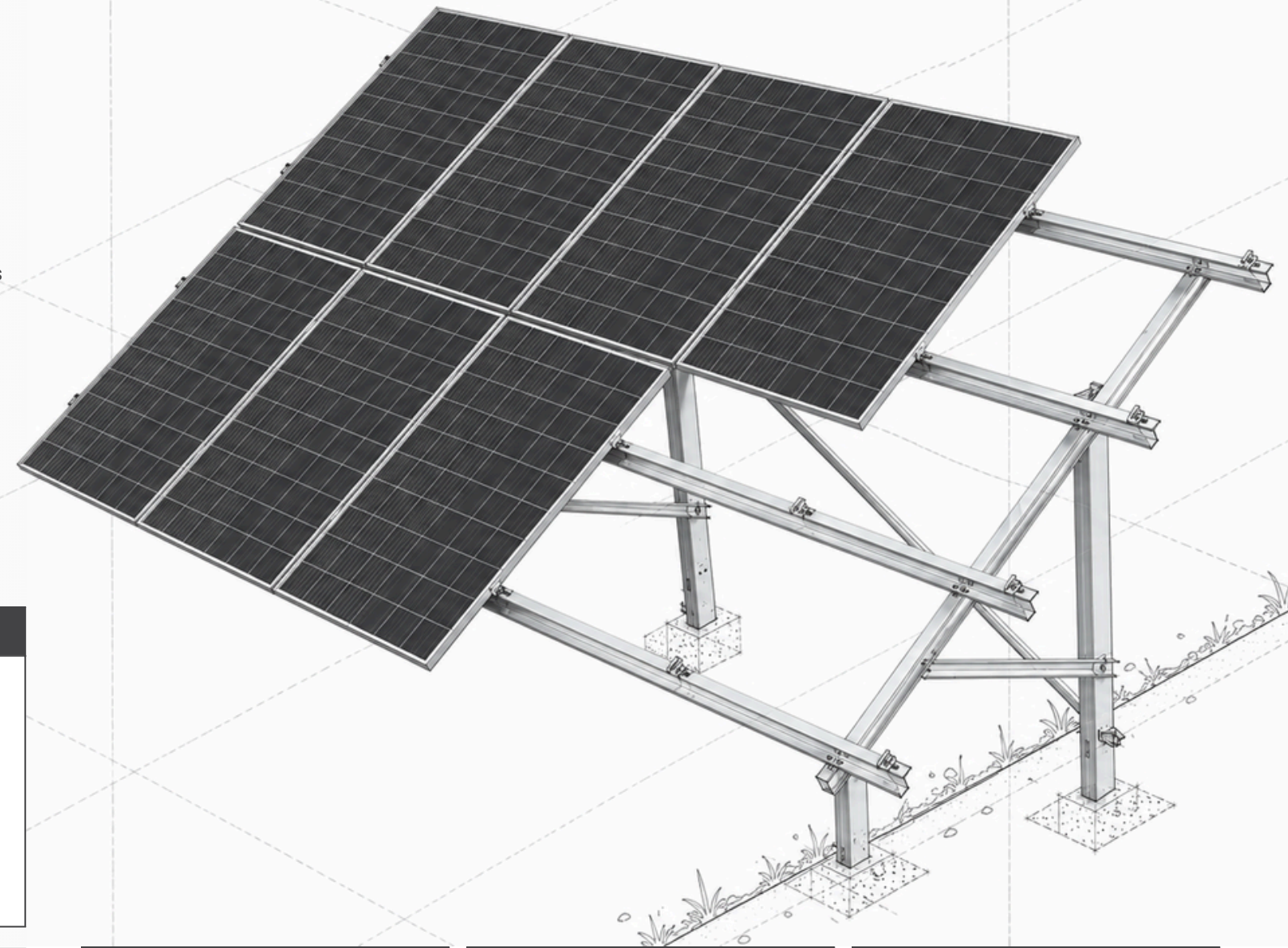
**BEAMS AND PROFILES**  
High-strength steel profiles engineered for maximum structural strength and stability



**CONNECTIONS**  
High-strength mechanical connections ensuring structural stability



**SELF-LOCKING CLAMPS**  
Patented clamping system mounted from underneath the structure, enabling fast installation, secure module fixation and efficient maintenance access



- ✓ ISO 9001 | ISO 14001 | ISO 45001
- ✓ EN 1090 EXC1-EXC2 (TÜV Rheinland certified)
- ✓ Wind tunnel tested in Germany

GENERAL PARAMETERS	
Structure type	Fixed tilt system
Module configuration	Portrait / landscape
Tilt angle	Project-specific angle
Orientation	South & East-West
Compatibility	Large-format PV modules
Bifacial ready	Yes

ENVIRONMENTAL CONDITIONS
✓ Corrosion categories C3 / C4 / C5
✓ Environmental exposure analysis
✓ Corrosion protection for underground-contact components
✓ Zn-Al-Mg protective coatings
✓ A2 / A4 stainless steel fasteners
✓ Pile length optimization
✓ Adaptation to ground conditions

STRUCTURE AND FOUNDATIONS
✓ Magnelis® / Zn-Al-Mg coatings
✓ Driven pile foundations
✓ Concrete foundations
✓ Anchored foundation systems
✓ A2 / A4 stainless steel fasteners
✓ Pile length optimization
✓ Adapted to site-specific ground conditions

STRUCTURAL SYSTEM
✓ Single-, double- and triple-post structures
✓ South-facing and East-West configurations
✓ Optimized support spacing
✓ Designed for bifacial modules
✓ Optimized inter-row shading
✓ Structural stability under wind and snow loads

ENGINEERING AND DESIGN
✓ Project-specific table engineering
✓ PV plant layout analysis
✓ Module configuration optimization
✓ Material consumption optimization
✓ Adapted to local site conditions
✓ Compliance with module manufacturer requirements

SITE ANALYSIS
✓ Snow and wind zone analysis
✓ Structural load verification
✓ Site topography analysis
✓ Tilt angle optimization
✓ Adaptation to uneven terrain
✓ Geotechnical soil corrosivity assessment

SOIL TESTING AND VERIFICATION
✓ Geotechnical report
✓ Pile pull-out testing
✓ Soil bearing capacity analysis
✓ Pile embedment optimization
✓ Structural stability verification
✓ Delayed pull-out testing, compression testing and lateral load testing for challenging soil conditions

SAFETY AND OPERATING CONDITIONS
✓ Snow and wind resistance
✓ Optimized load distribution
✓ Long-term structural durability
✓ Compliance with module manufacturer specifications



**WARRANTY AND EXPERIENCE**

Warranty  
**10-year** product warranty  
**25-year** corrosion warranty



**PRODUCTION AND LOGISTICS**

Lead time  
**from 3 weeks**  
after contract signing

Components in stock  
**>400 MW**  
available in stock

**100%**  
In-house manufacturing of steel and aluminum components



**GLOBAL SUPPLY CHAIN**

- ✓ 15 export countries
- ✓ Proven logistics network across Europe



**COST AND TIME OPTIMIZATION**

- ✓ Optimized structural steel usage
- ✓ Reduced installation time
- ✓ Lower lifetime system cost
- ✓ Solution optimized for utility-scale projects
- ✓ Long-term structural reliability



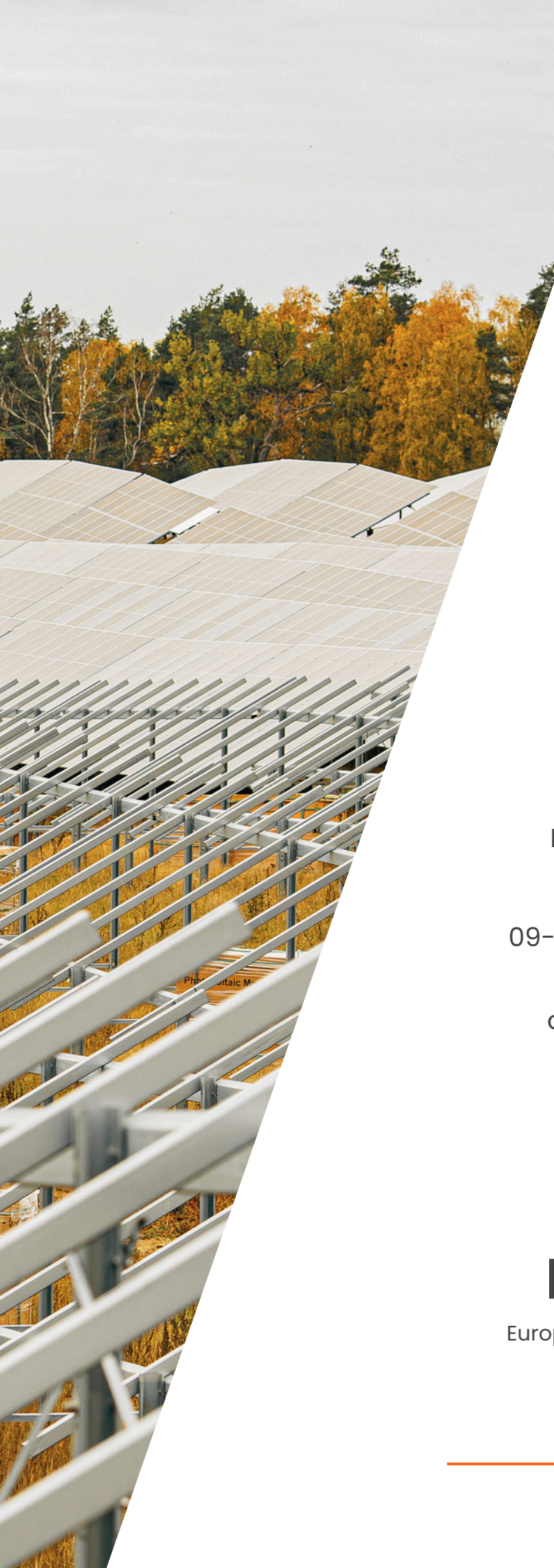
**INSTALLATION AND SUPPORT**

- ✓ Fast and repeatable installation
- ✓ No specialized tools required
- ✓ Technical and engineering support
- ✓ Custom project solutions
- ✓ On-site support and training



**3D TERRAIN ANALYSIS**

- ✓ Pile length optimization
- ✓ Soil stability assessment
- ✓ High-resolution 3D models
- ✓ Layout optimization
- ✓ Accurate cut & fill
- ✓ Pile alignment verification
- ✓ Reduced installation risk



**Energy5 Sp. z o.o.**

Ziejkowa 5  
09-500 Gostynin, Polska

office@energy5.pl  
+48 666 557 556

[www.energy5.pl](http://www.energy5.pl)

**Energy5**

European-Made PV Structures

---