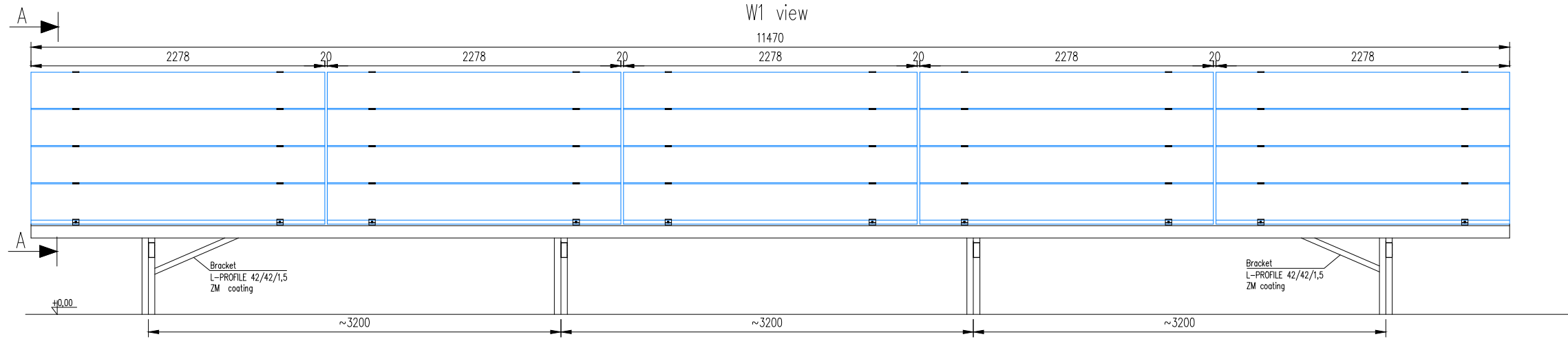
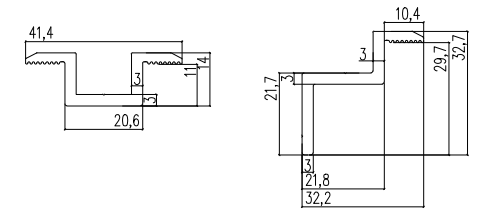


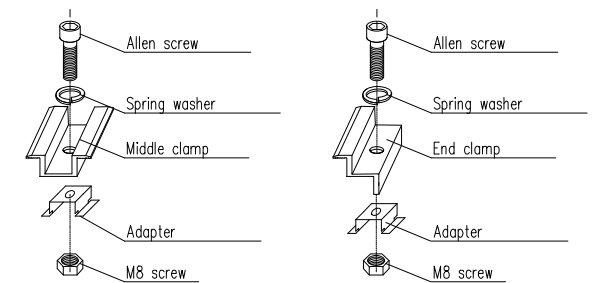
Driven in system with three supports, horizontal layout of modules (EW)



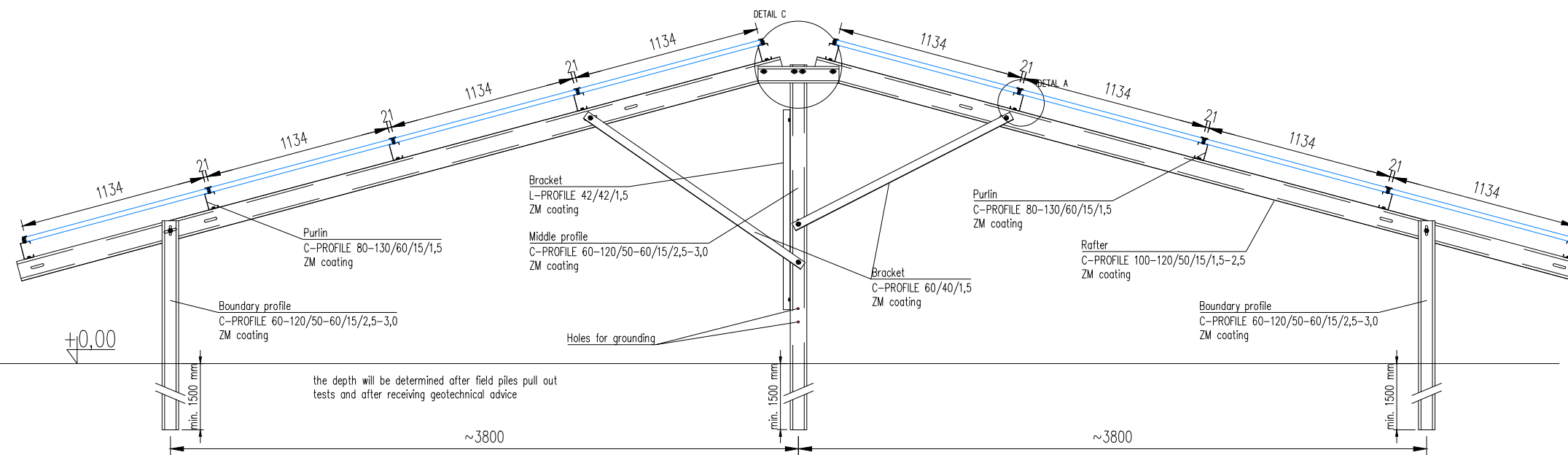
Dimensions of the end and middle clamp,
length 50 mm
Material: Aluminum 6005 T6
or 6082 T6 aluminium



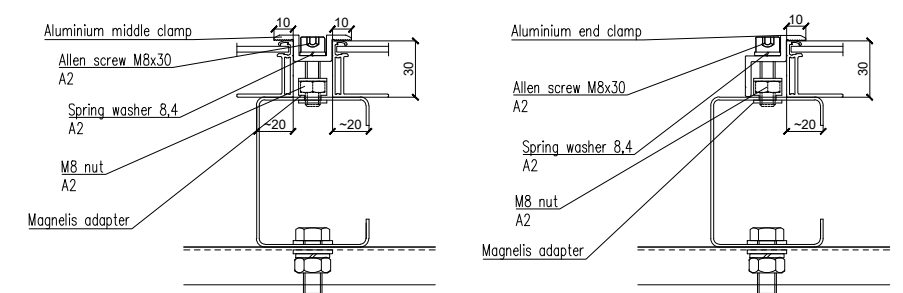
Clamps installation



A-A CROSS-SECTION



Clamps installation details

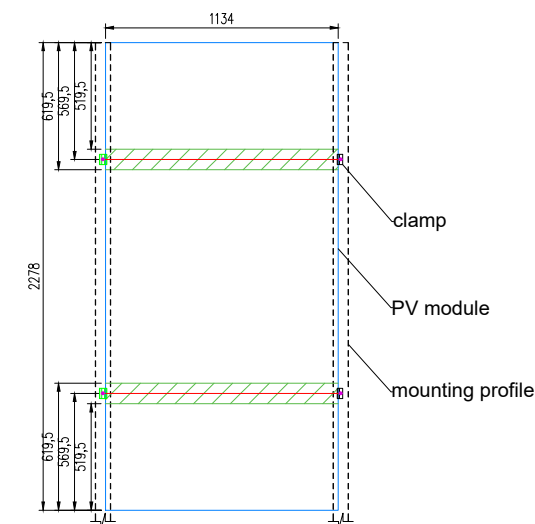


The offered products in the form of cold-formed steel sections are made in accordance with the PN-EN 10162 standard.

The table has been calculated according to the loads on:
- Wind - zone I - load value 0.3 kN/m² according to PN-EN 1991-1-4
- Snow - zone I - load value 0.7 kN/m² according to PN-EN 1991-1-3

NOTE:
The presented offer sheet is for illustrative purposes only.
The assembly of the presented table should be carried out on the basis of the assembly instructions.

Clamp mounting zone for photovoltaic module



Energy5 Sp. z o.o. reserves the right to use a material equivalent to that of Magnelis coating. Equivalent means that Energy5 Sp. z o.o. has its own tests of substitute / equivalent material in the corrosive range carried out by an accredited laboratory. The results of these tests confirm the parameters are no worse than in the case of the Magnelis coating.

All drawings and/or studies are the property of the design team of Energy5 Sp. z o.o. Sharing, reproduction, any activities related to changes and dissemination of designs or author's ideas is prohibited without the written consent of Energy5 Sp. z o.o.

Energy 5 Sp.z o.o.
ul. Ziejkowa 5, 09-500 Gostynin
www.energy5.pl
tel: +48 (24) 362 08 48
fax: +48 (24) 362 08 49



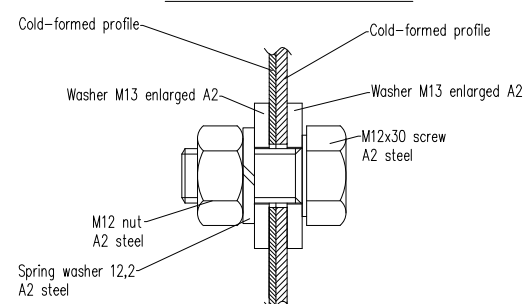
Drawing title:
Driven in system with three supports, 15°, horizontal 2x4x5 layout (EW)

Drawing no.:
WS3W_15°H_2x4x5_EW

Scale:

Sheet:
A3

Screws installation method



DETAIL C

