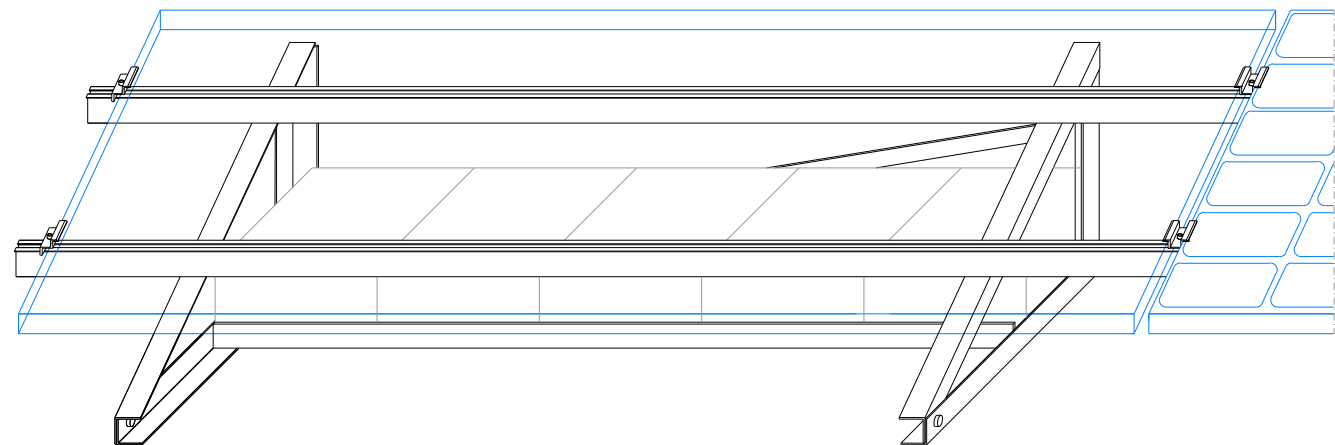


FLAT ROOF MOUNTING SYSTEM - EKIERKA ECO BALLAST

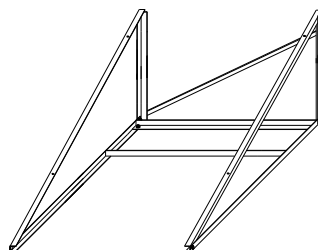
Horizontal mounting system on rail 38x45 type
 101.001 with ballast - DP.1HB eco

Technical specifications

System material	aluminium and stainless steel
Roof type	flat roof
Tilt angle	15°, 20°, 25°, 30°, 35°
Module orientation	horizontal
System montażu	on the short side on mounting rail 38x45 type 101.001
Roof area for 1 kW <small>(dla modułu 1650x992)</small>	for tilt angle 15° - 7,4m ² for tilt angle 20° - 7,1m ² for tilt angle 25° - 6,8m ² for tilt angle 30° - 6,5m ² for tilt angle 35° - 6,1m ²
Roof load for 1 kW <small>(without modules)</small>	for tilt angle 20° - 17,8kg for tilt angle 20° - 17,9kg for tilt angle 25° - 18,1kg for tilt angle 30° - 18,2kg for tilt angle 35° - 18,3kg
Ballast load	min. 62,5 kg/module



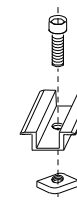
ekierka eco with ballast



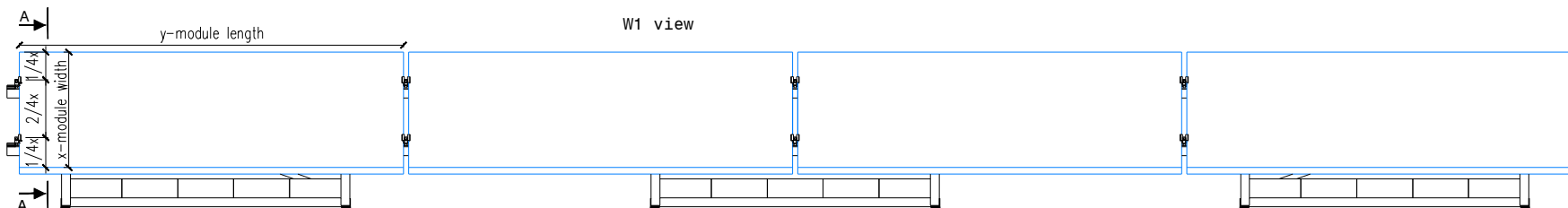
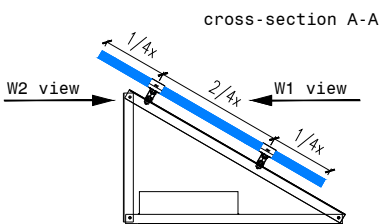
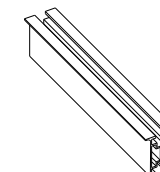
closing clamp 102.003
 allen screw 202.003
 hammer nut 203.001



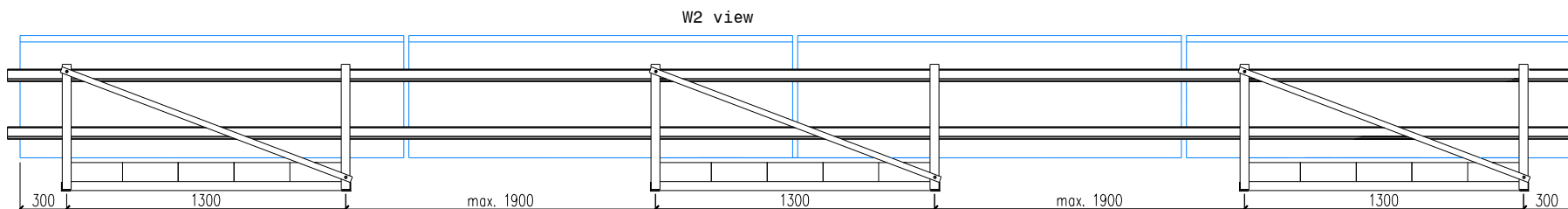
middle clamp 102.001
 allen screw 202.003
 hammer nut 203.001



mounting rail 38x45 101.001



W1 view



W2 view