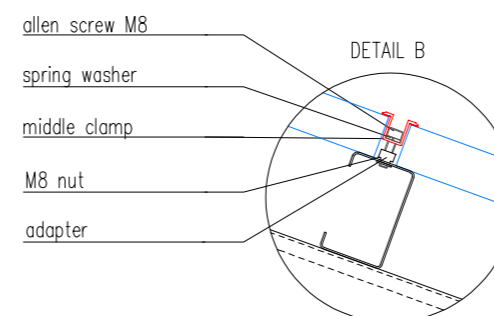
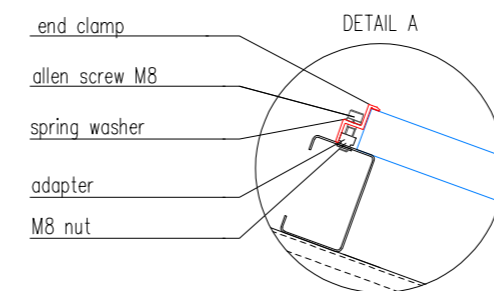
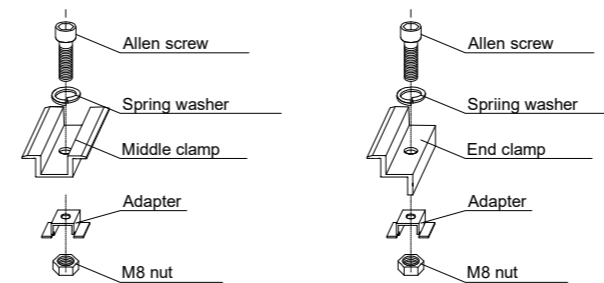
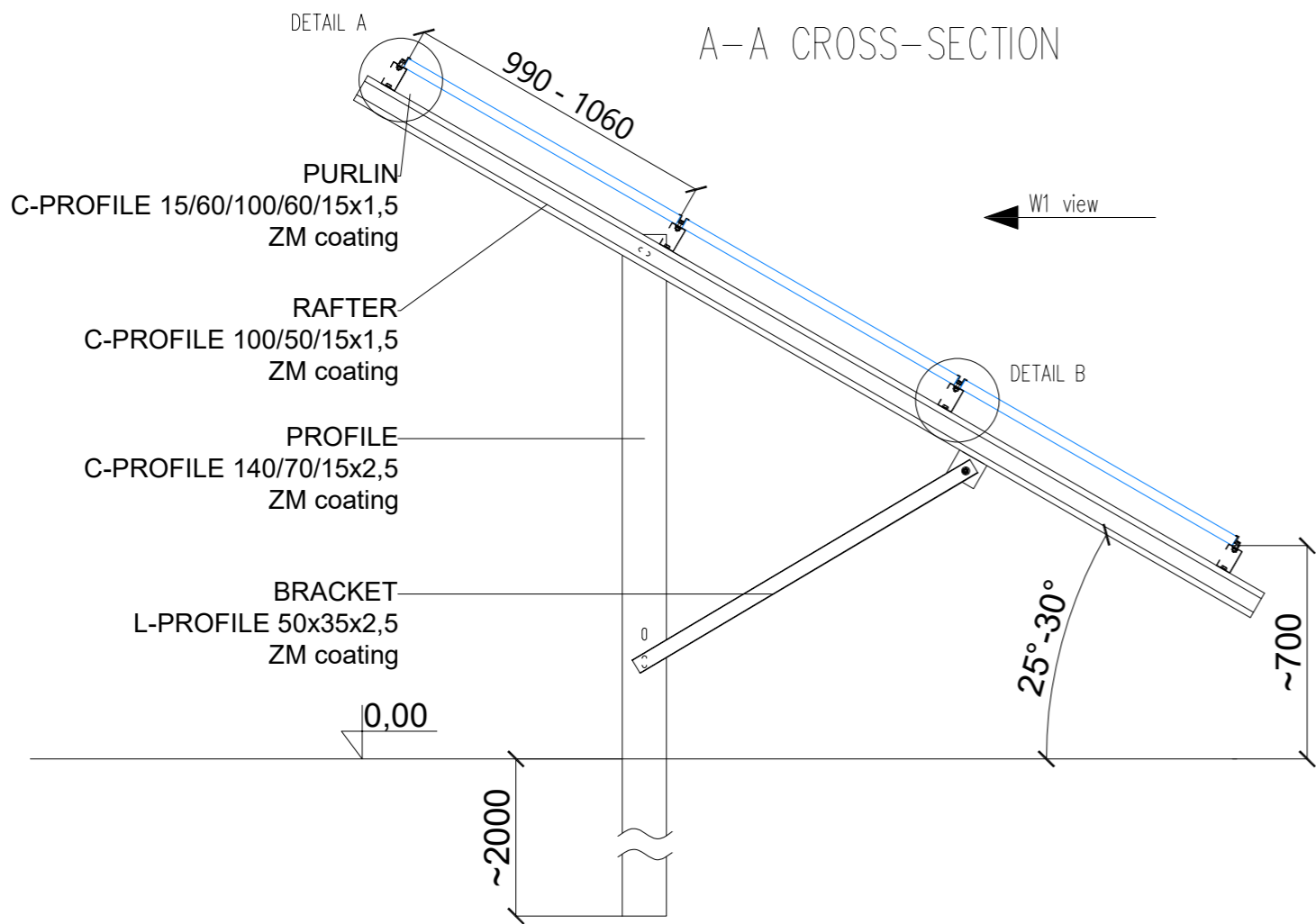
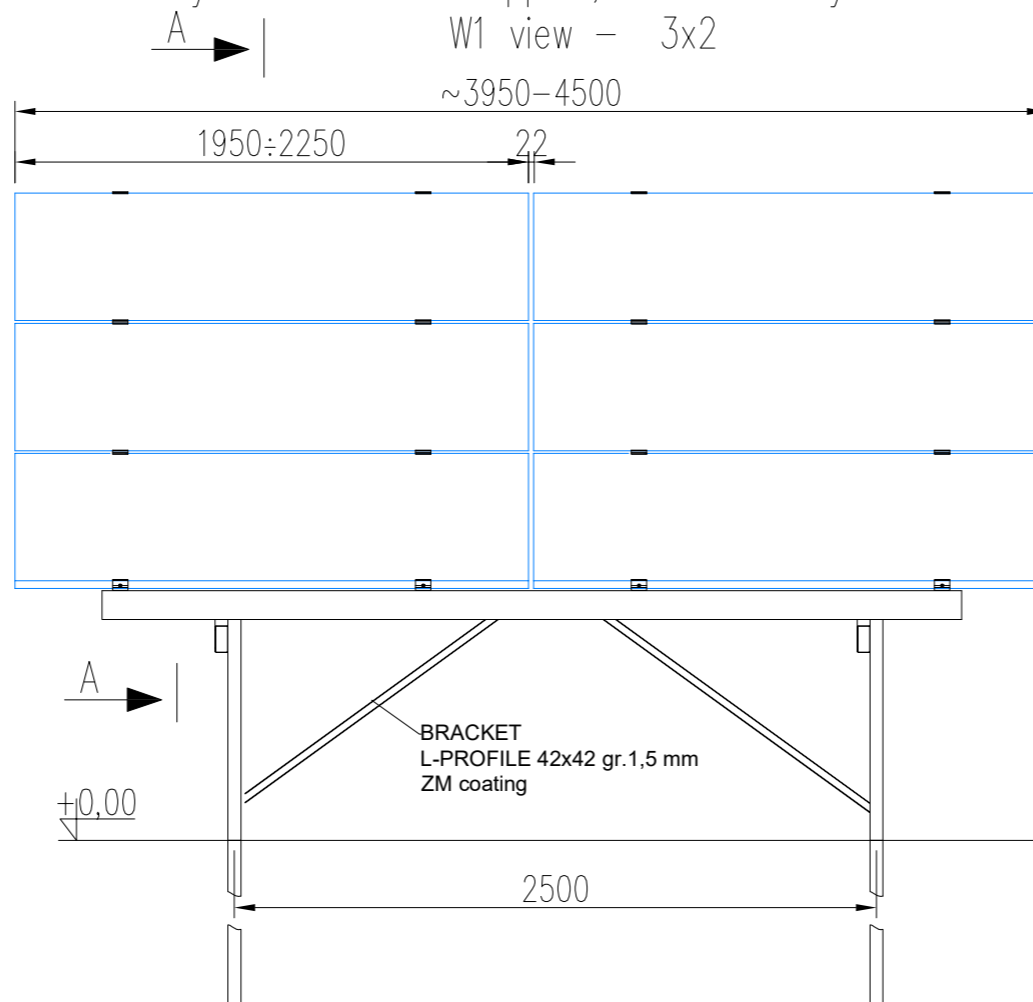


Driven in system with one support, horizontal layout of modules



All drawings and/or studies are the property of the design team of Energy5 Sp. z o.o. Sharing, reproduction, any activities related to changes and dissemination of designs or author's ideas is prohibited without the written consent of Energy5 Sp. z o.o.

**NOTE:**

- Individual free-standing systems depend on the snow and wind load zone.
- Wind - load value according to PN-EN 1991-1-4
- Snow - load value according to PN-EN 1991-1-3

The offered products in the form of cold-formed steel sections are made in accordance with the PN-EN 10162 standard

The presented offer sheet is for illustrative purposes only. The assembly of the presented table should be carried out on the basis of the assembly instructions

Energy5 Sp. z o.o. reserves the right to use a material equivalent to that of Magnelis coating. Equivalent means that Energy5 Sp. z o.o. has its own tests of substitute / equivalent material in the corrosive range carried out by an accredited laboratory. The results of these tests confirm the parameters are no worse than in the case of the Magnelis coating.

Energy 5 Sp.z o.o.  
ul. Ziejkowa 5, 09-500 Gostynin  
www.energy5.pl  
tel: +48 (24) 362 08 48  
fax: +48 (24) 362 08 49



Drawing title:  
Driven in system with one support, 25°-30°, horizontal 3x2 layout

Scale:  
1:20

Drawing no.:  
WS1W\_25/30°H\_3x2 1,95-2,25m

Sheet:  
A4