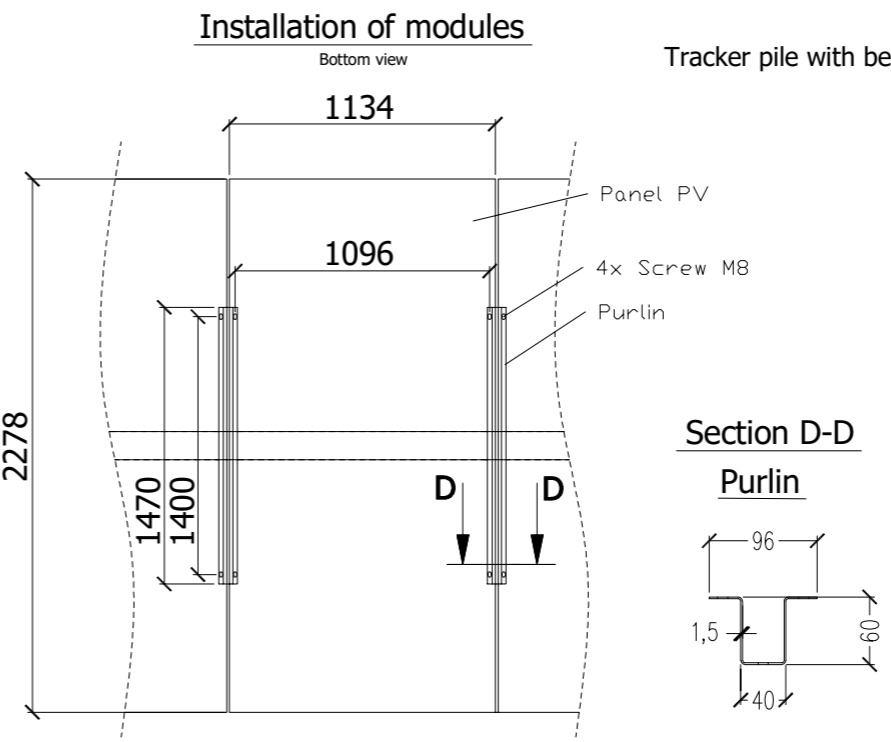
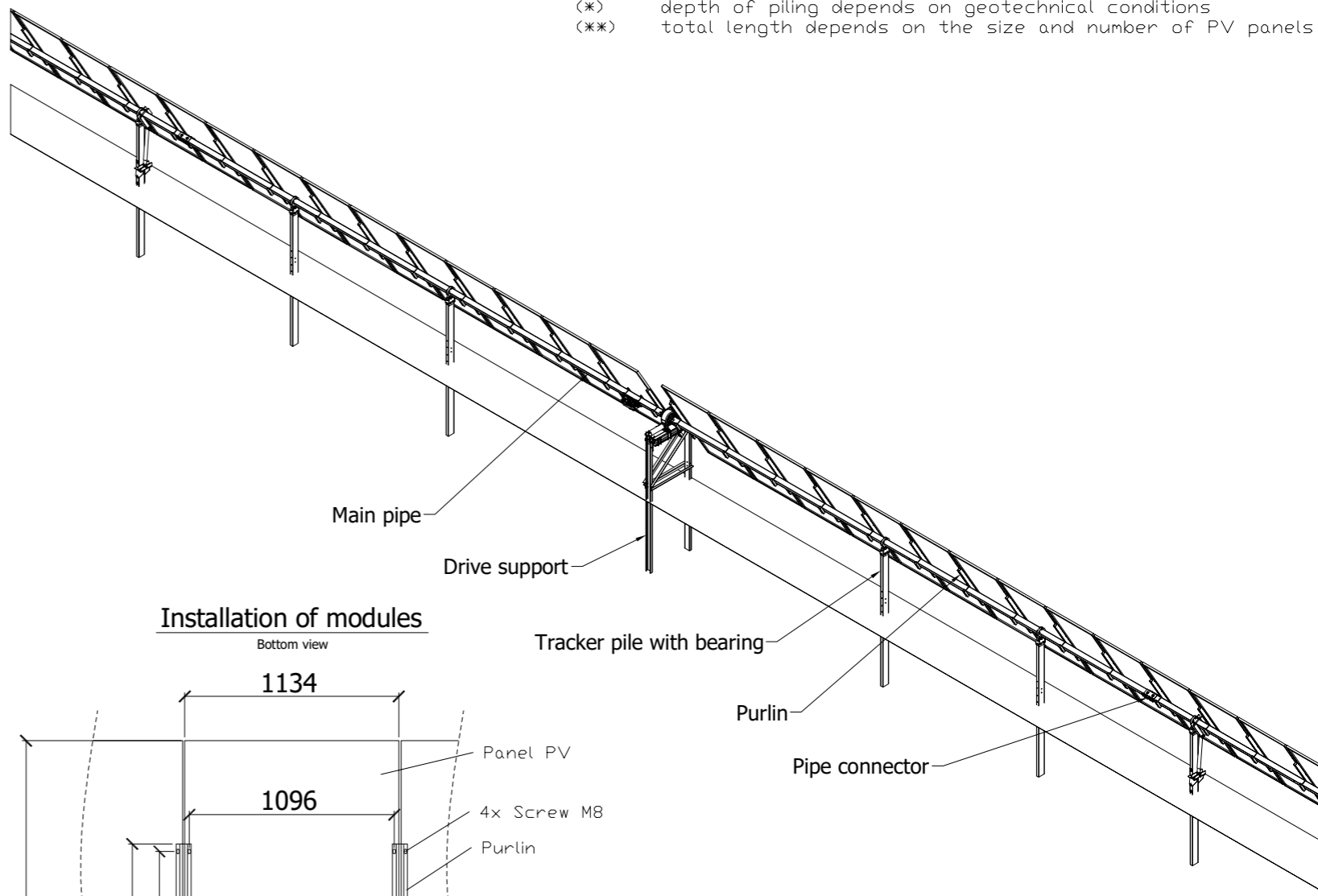
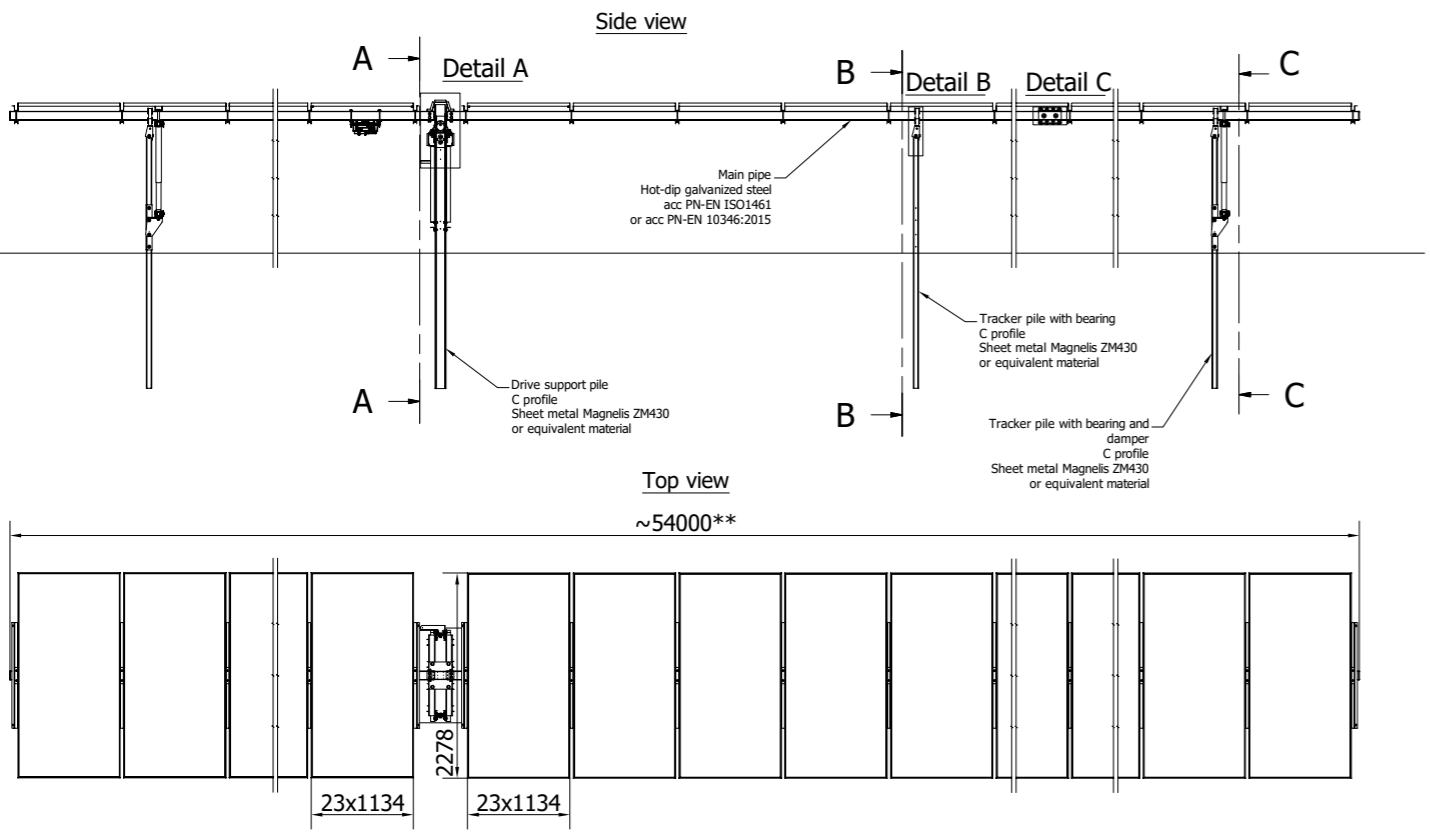
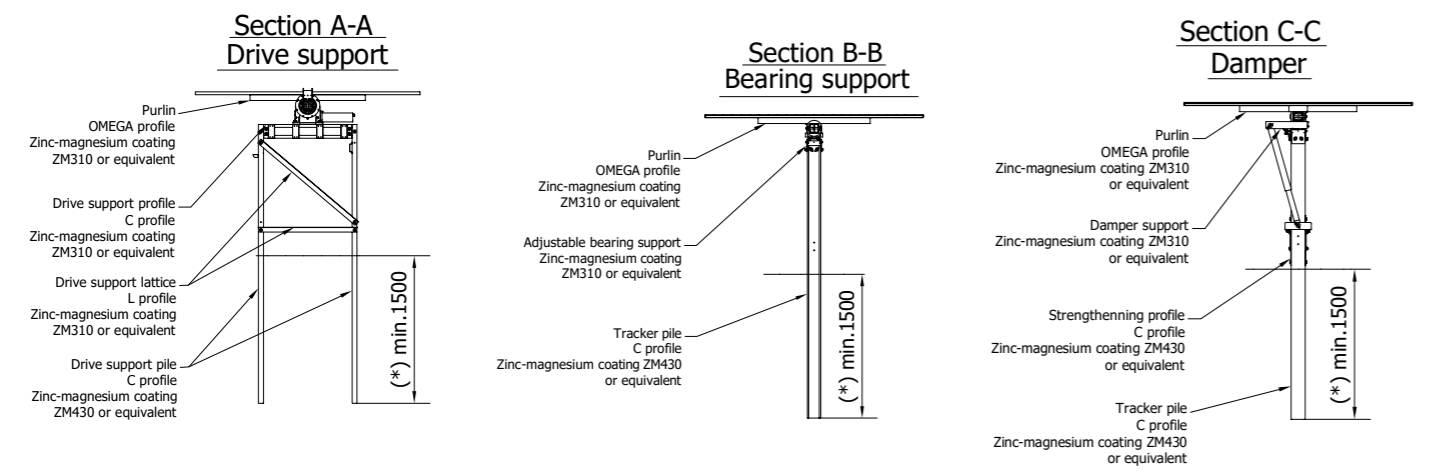


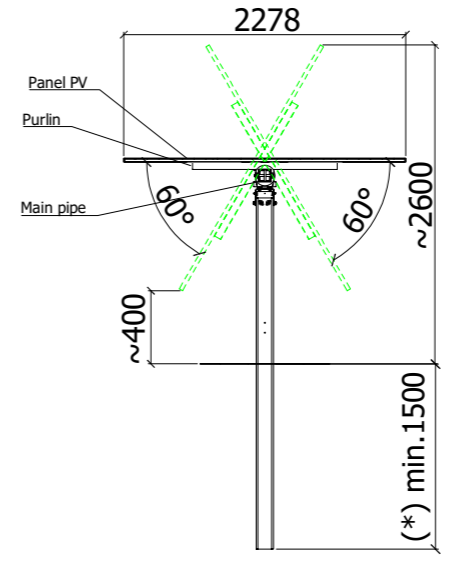
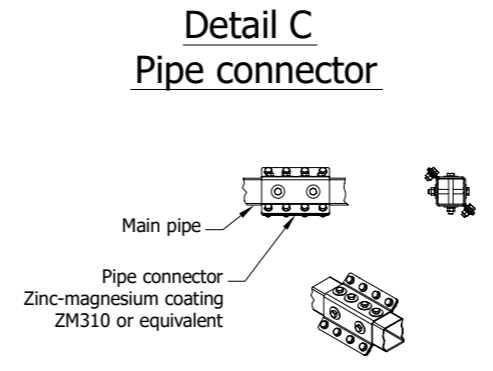
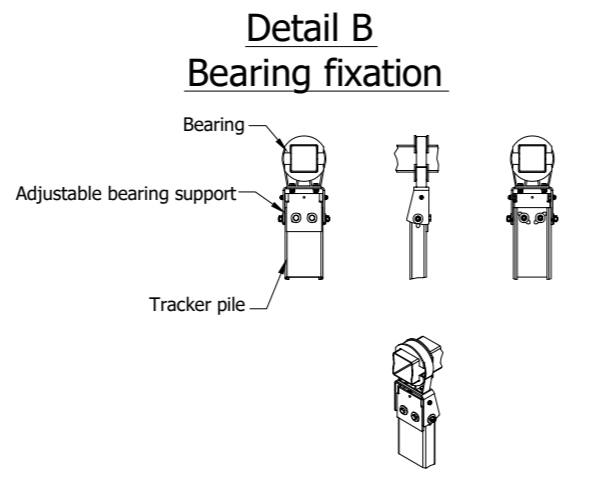
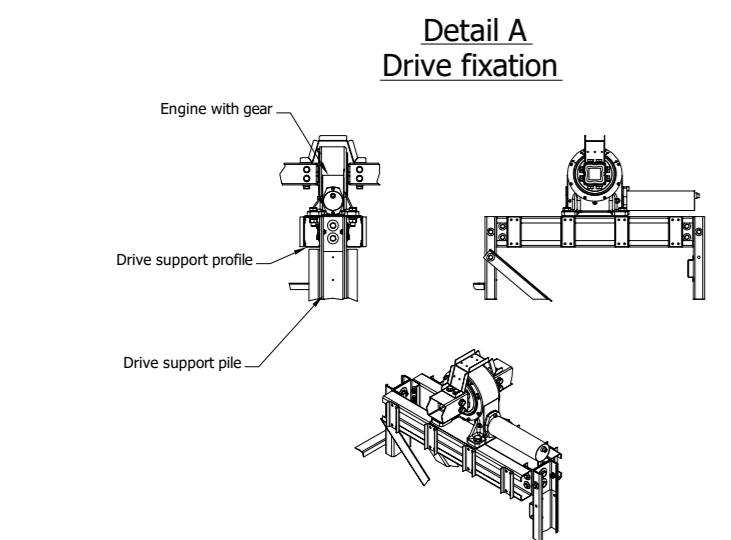
(\*) depth of piling depends on geotechnical conditions  
 (\*\*) total length depends on the size and number of PV panels



**ATTENTION:**  
 Construction calculated for snow and wind loads in accordance with the standard:  
 Wind - acc. PN-EN 1991-1-4  
 Snow - acc. PN-EN 1991-1-3

Construction made of materials:  
 Steel covered with zinc-magnesium coating ZM430/ZM310 or equivalent  
 Structural steel hot-dip galvanized acc. PN-EN ISO1461 PN-EN ISO1461  
 or acc. PN-EN 10346:2015  
 Fasteners steel A2

System parameters in a separate appendix.



Energy5 sp. z o.o. reserves the right to use a material other equivalent than the Magnelis coating. Equivalent means that Energy5 sp. z o.o. has its own tests of a replacement/equivalent material in the corrosion range carried out by an accredited laboratory. The results of these tests confirm the parameters are not worse than in the case of the Magnelis coating.

The offered products in the form of cold-formed steel sections are made in accordance with the PN-EN 10162 standard.

The offer card presented is for illustrative purposes only. The assembly of the presented system should be carried out on the basis of the assembly instructions.

All drawings and/or studies are the property of the Energy5 sp. z o.o. design team. Sharing, duplication, any activities related to changes and dissemination of designs, copyright ideas is prohibited without the written consent of Energy5 sp. z o.o.

Energy 5 Sp.z o.o.  
 ul. Ziejkowa 5, 09-500 Gostynin  
 www.energy5.pl  
 tel: +48 (24) 362 08 48  
 fax: +48 (24) 362 08 49



Drawing title: Tracker Card 1x46V	Scale: ---
Drawing number: TR_1xV	Sheet: A3