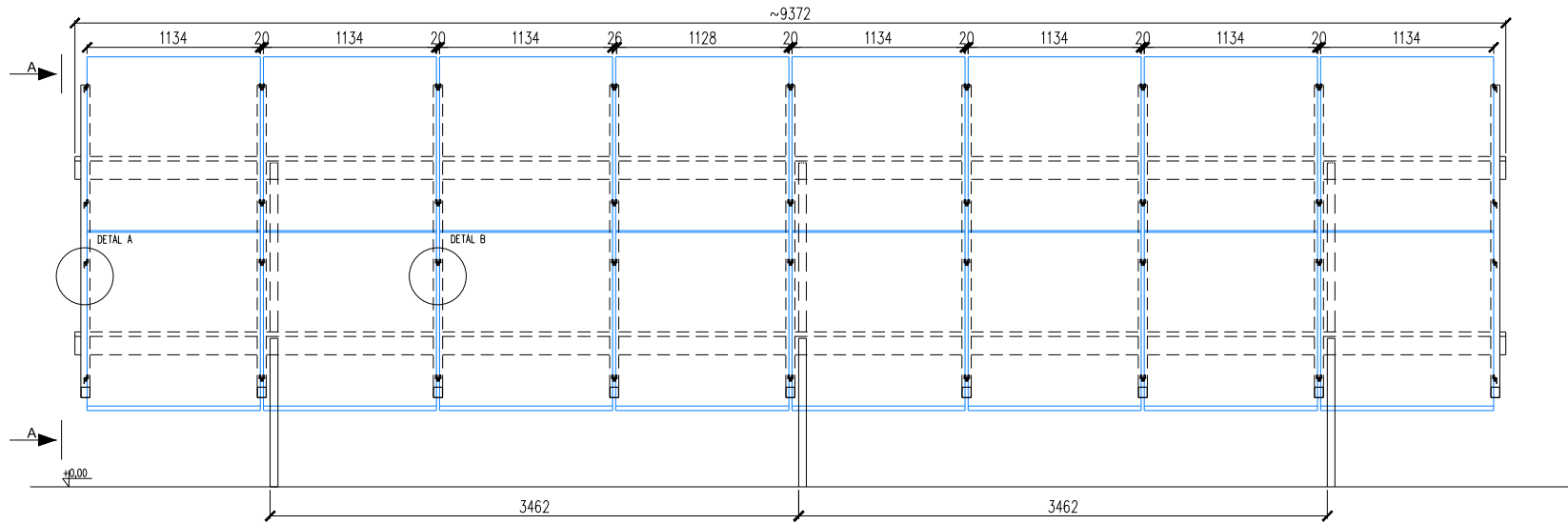
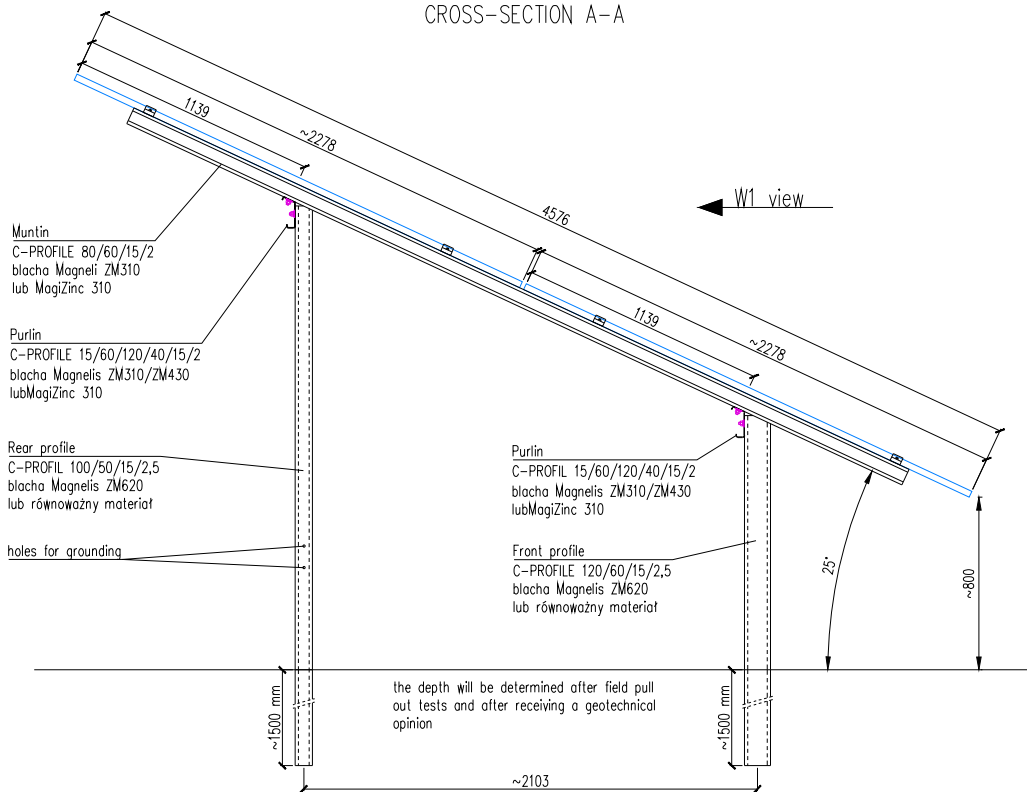


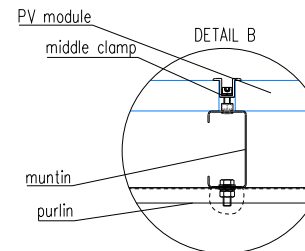
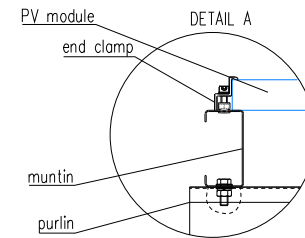
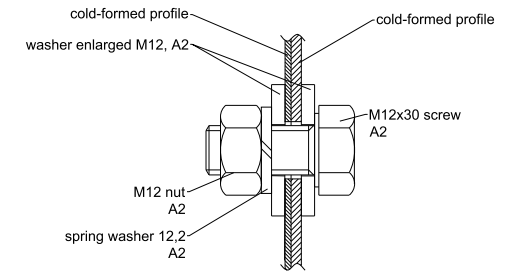
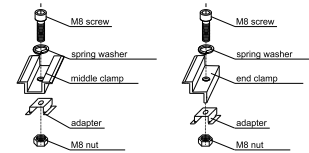
W1 view - 2x8 system



CROSS-SECTION A-A



Clamps mounting system



The offered products in the form of cold-formed steel sections are made in accordance with the PN-EN 10162 standard.

The table was calculated according to the loads on:

- Wind - load value acc. PN-EN 1991-1-4
- Snow - load value acc. PN-EN 1991-1-3

The presented offer card is for illustrative purposes only. The table presented should be assembled according to the assembly instructions.

Energy5 sp. z o. o. reserves the right to use a material equivalent to that with the Magnelis coating. Whereby equivalent means that Energy5 sp. z o. o. has its own corrosion tests of replacement/equivalent material conducted by an accredited laboratory. The results of these tests confirm parameters that are no worse than those of the Magnelis coating.

All drawings and/or studies are the property of the design team of Energy5 Sp. z o. o.. Sharing, reproduction, any activities related to changes and dissemination of designs, copyrights are prohibited without the written consent of Energy5 Sp. z o. o.

Energy 5 Sp.z o.o.  
ul. Ziejkowa 5, 09-500 Gostynin  
www.energy5.pl  
tel: +48 (24) 362 08 48  
fax: +48 (24) 362 08 49



Drawing title:  
Bifacial system with two supports, 2xV layout, 25°

Scale:  
---

Drawing no.:  
Bifacial system, 2xV layout

Sheet:  
A3